

Master Planning for the Moose Hill School

May 23rd and June 13th 2023
School Board Meetings

May 4 Preliminary Draft - Not Ready for School Board Meeting

1st Charge of the Kindergarten Committee

The committee will be responsible for gathering community feedback, staff feedback and parent feedback within the context of feasibility to ultimately return to the board with a recommendation in regard to moving forward with a full day kindergarten plan or not backed by full day versus half day research.

May 4 Preliminary Draft - Not Ready for School Board Meeting

We recommended pursuing Full Day Kindergarten this Fall (Sept. 2022) to the School Board and continued to gather feedback from the Community in the Fall and Winter.

HighLights from Earlier Presentations on Full Day Kindergarten

MAP KEY:
Red- Tuition Based
Yellow- Half Day
Green- Full Day



Londonderry is behind the state and country in providing Full Day Kindergarten.

May 4 Preliminary Draft - Not Ready for School Board Meeting

Besides being a more attractive community to move to, Full Day Kindergarten gives our youngest students **significantly more time** to develop for future success.

675 Hours More
Hours for
Practice &
Learning



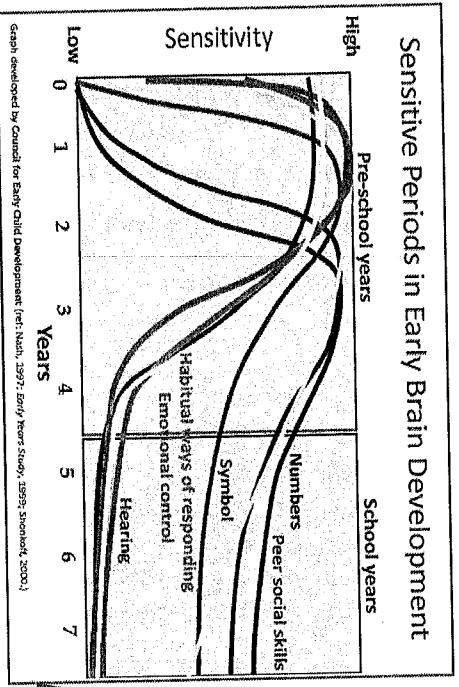
495
Hours

1,170
Hours

2.75 Hour K Program

6.5 Hour K Program

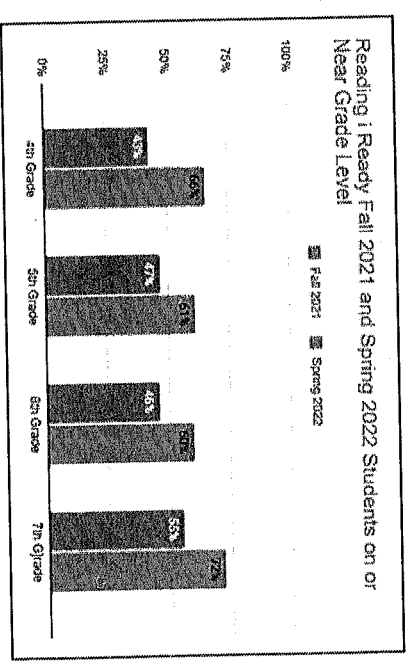
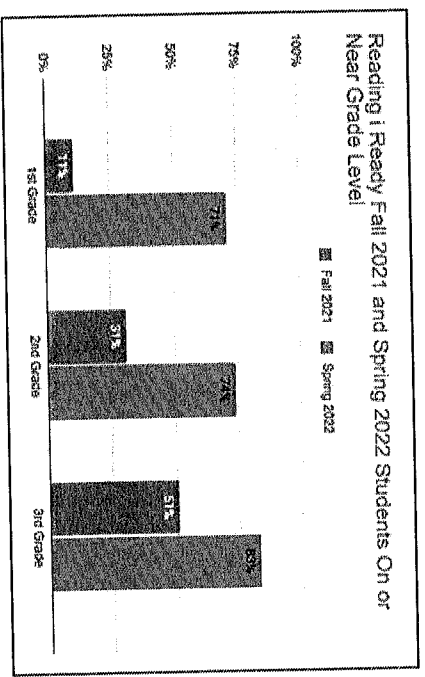
Highlights from Earlier Presentations on Full Day Kindergarten



90% of Brain Development happens by the end of Kindergarten. We need to catch them earlier to build a strong foundation for the rest of their school years.

May 4 Preliminary Draft - Not Ready for School Board Meeting

As a School System we want to invest the time into Full Day Kindergarten to build a stronger foundation in our students so we improve our outcomes after 3rd grade!



HighLights from Earlier Presentations on Full Day Kindergarten

71% Favorable

Google Form After
Presentations
9/20/22 & 10/27/22

81% Favorable

Senior Expo

100% Favorable

Craft Fair

Up to this point, Londonderry has a favorable reaction to continuing this dialogue now and in the future around Full Day Kindergarten.

May 4 Preliminary Draft - Not Ready for School Board Meeting

Ultimately, the School Board will need to determine if a upcoming ballot is how Londonderry “votes” for Full Day Kindergarten or Not.

Our recent experience with the Infrastructure Bond should inform how the School Board can approach this goal.

2nd Charge of the Kindergarten Committee

In the event of a full day recommendation the committee should research and present to the board the anticipated additional needs to support this.

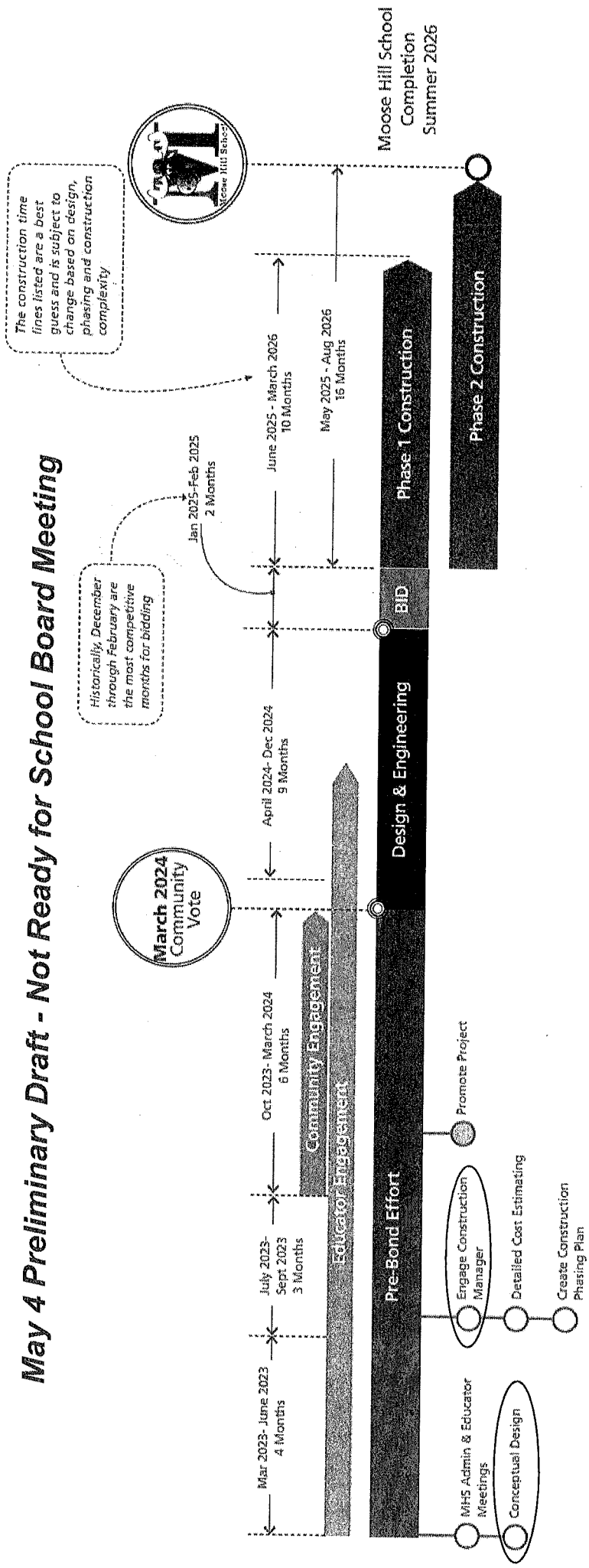
May 4 Preliminary Draft - Not Ready for School Board Meeting

The upcoming presentation lays out a multi-phase approach to Moose Hills' needs for Full Day Kindergarten.

Old Timeline

MOOSE HILL SCHOOL

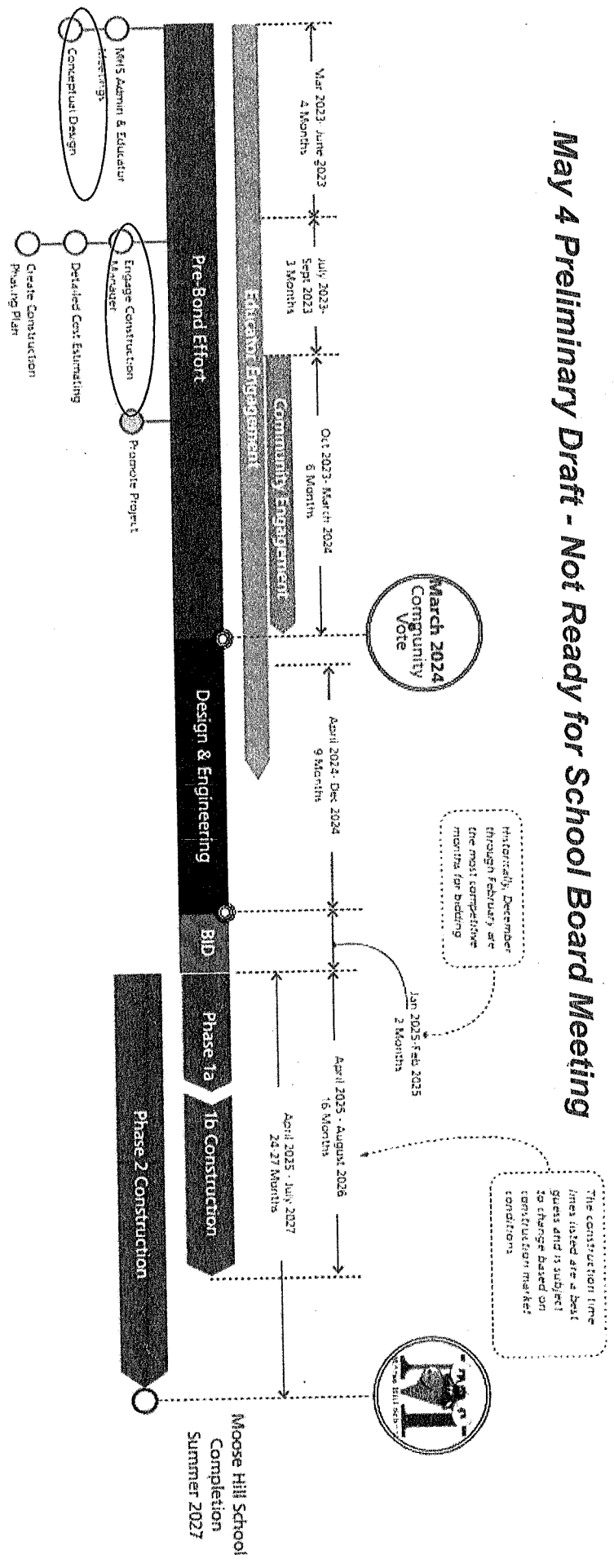
May 4 Preliminary Draft - Not Ready for School Board Meeting



New Timeline

Project Time Line

May 4 Preliminary Draft - Not Ready for School Board Meeting



Two Different Space Issues for Moose Hill Long Term

Current Overcrowding Issues

Phase 1 Proposal

What Moose Hill needs for current levels of programming.

We need the space for all the *specialization* that happens for our 3 to 5 year olds.

Kindergarten Classrooms

Therapy Spaces

Small Classroom Instruction

Staff Space

Better Entrance

Relieve Traffic Issues

May 4 Preliminary Draft - Not Ready for School Board Meeting

What we need if Londonderry does not support Full Day Kindergarten

More Space for Full Day Kindergarten Only

Phase 2 Proposal

What Moose Hill would need for a Full Day Kindergarten Expansion.

Kindergarten Classrooms

Specials Classrooms

Cafeteria

Additional Playground

Not Ready for School Board Meeting

Vetting the Space Needs for Phase 1 - Kindergarten

| | Phase 1 if Phase 2 is Never Approved - What Moose Hill Needs Now with Current Programming | |
|----------------------------------|---|---------------|
| | Current Needs | Current Needs |
| Kindergarten | 8 | 6 |
| Classrooms | 2 | 0 |
| General Special Education | 2 | 0 |
| Reading | 1 | 0 |
| Counselor Office | 1 | 0 |
| Counselor Therapy Space | 1 | 1 |
| Main Office with Conference Room | 2 | 0 |
| Clubhouse/Behavior Classroom | 1 | 1 |
| Library | 2 | 1 |
| Staff Bathrooms | 1 | 1 |
| Staff Room | 1 | 0 |
| Safer Entrance | 1 | 0 |
| Multi-Purpose Room | 1 | 0 |
| Nurses Office | 1 | 1 |

May 4 Preliminary Draft - Not Ready for School Board Meeting

The review lead us to realize we need 2 more Kindergarten classroom long term, many therapy and small group instruction spaces, an entrance like our other 5 schools, and a multi-purpose room for larger gatherings so that we do not affect the current Therapy Programming in the Multi-Sensory Room for LEEP.

Vetting the Space Needs for Phase 1 - LEEP

| Phase 1 if Phase 2 is Never Approved - What Moose Hill Needs Now with Current Programming | | | | | | |
|---|---------------|-------------|---------------|------------|---------------|---------------------|
| Special Education Programs | Current Needs | Square Feet | Current Haves | Gap Spaces | Current Needs | Current Programming |
| LEEP Pre K | 6 | 1200 | 6 | 0 | | |
| FRIENDS Program | 2 | 2000 | 1 | Partial | | |
| PALS Program | 1 | 1200 | 0 | Partial | | |
| FLEX Program | 1 | 1200 | 1 | 0 | | |
| OT/PT Therapy Space | 1 | 500 | 0 | 1 | | |
| OT/PT Office Space | 2 | 250 | 1 | Partial | | |
| SLP Therapy Space | 1 | 250 | 0 | 1 | | |
| SLP Office Space | 2 | 250 | 2 | Partial | | |
| Multi-Sensory Room | 1 | 2000 | 1 | 0 | | |
| SPED Admin Office & Smaller Conference Room | 1 | 1200 | 1 | Partial | | |

Parking and Traffic Flow & Playground

We need a solution that allows for b

1) Better Flow of Traffic

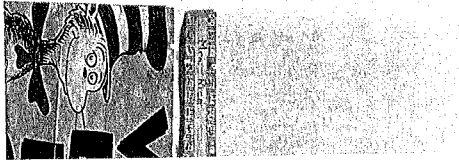
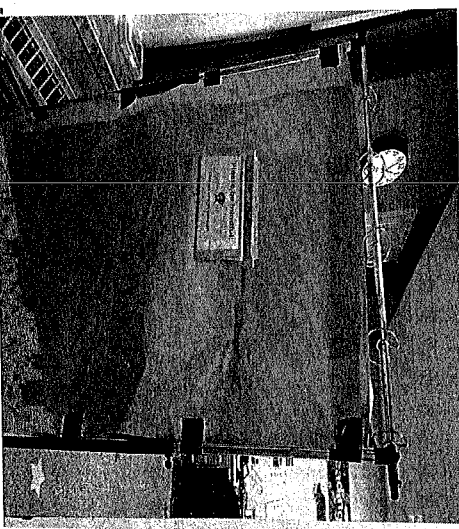
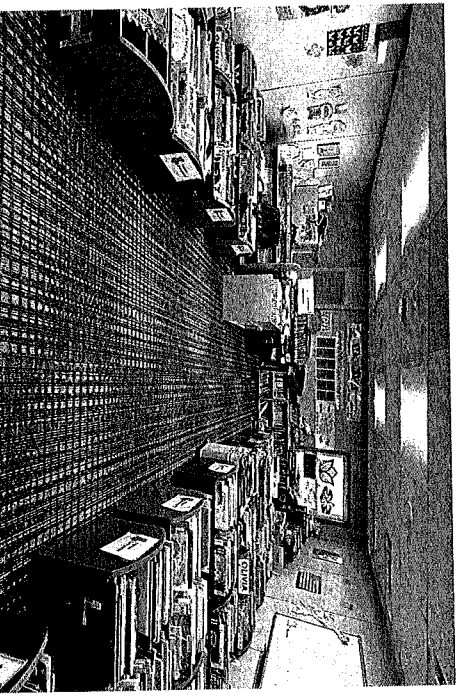
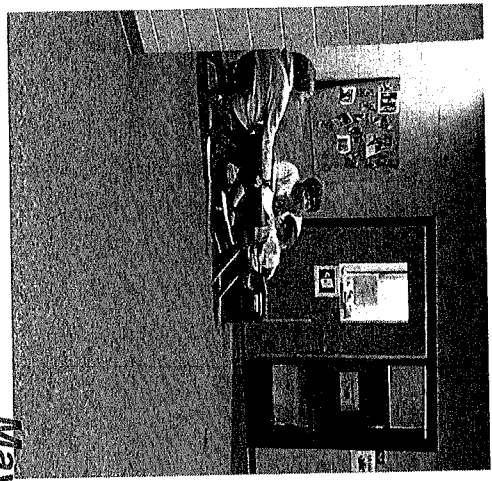
2) 2 Drop Offs - one for LEEP & One for K

Move Current K Playground

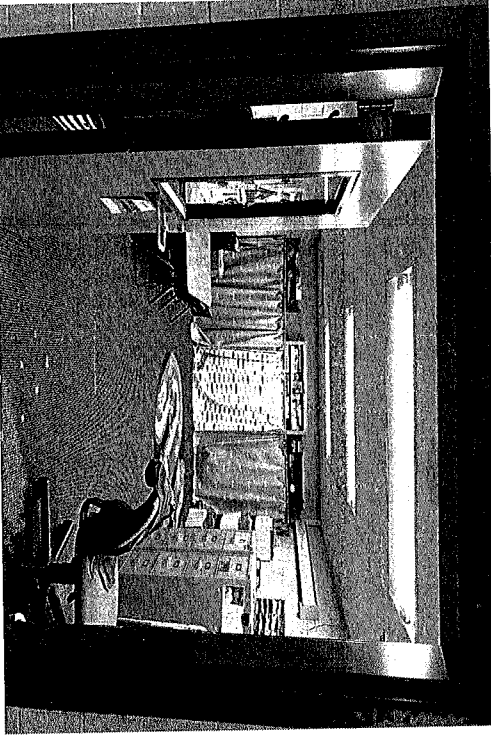
May 4 Preliminary Draft - Not Ready for School Board Meeting

For current Special Education Programming, our review lead us to realize we need larger rooms for FRIENDS, a room for PALS and more therapy spaces for students and office spaces for the adults in the building. Outside the building we need to create a traffic loop like our other 5 schools and move the current playground to accommodate Phase 1.

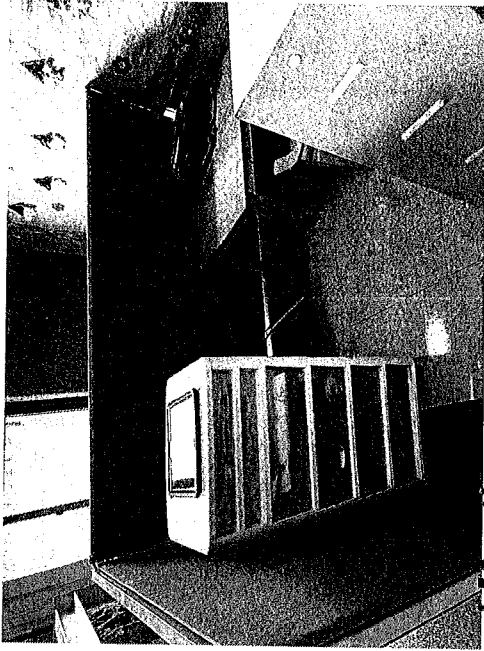
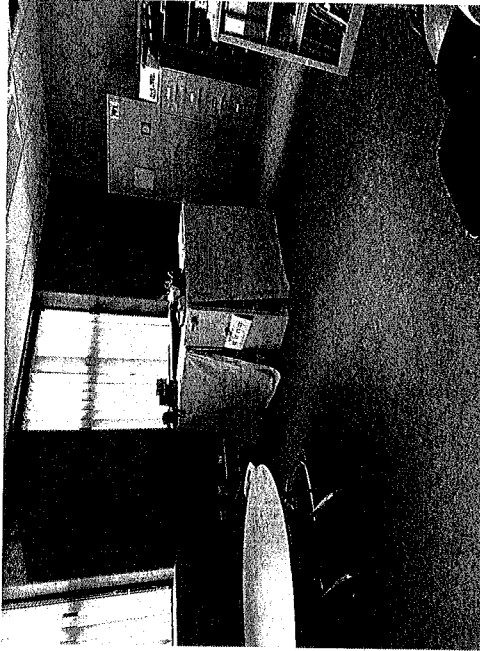
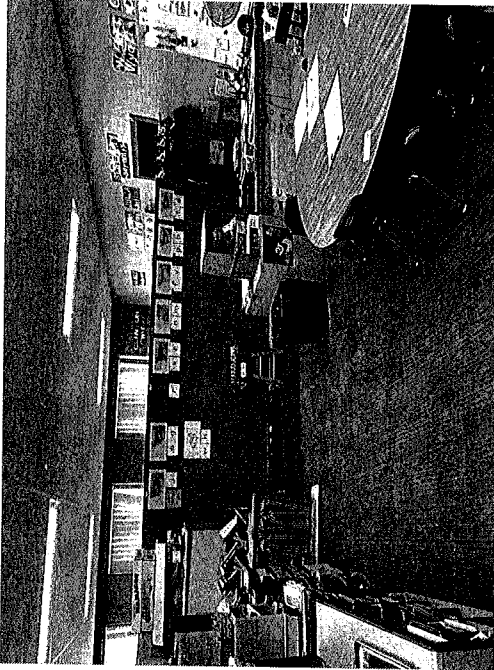
Overcrowding Pictures Right Now



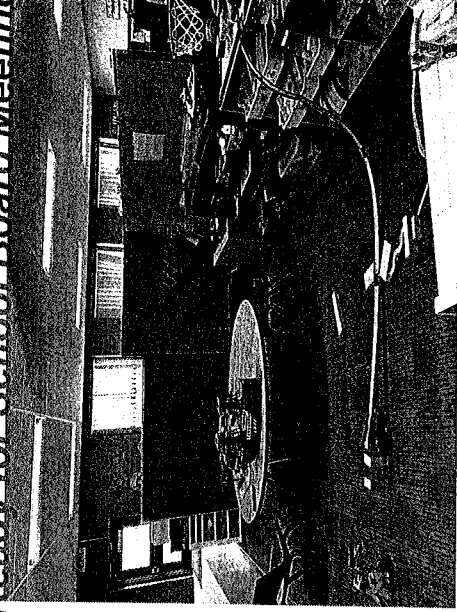
May 4 Preliminary Draft - Not Ready for School Board Meeting



Overcrowding Pictures Right Now



May 4 Preliminary Draft - Not Ready for School Board Meeting



Why We Need these New Spaces to Relieve Overcrowding

For Current Kindergarten Program

| New Space | Why We Need It |
|--|---|
| 2 Kindergarten Classrooms | To replace the 2 portables |
| 2 Reading Small Group Instruction Spaces | Right now they are in the staff room |
| 2 Small Instruction Spaces for Special Education | Right now they are in a partitioned classroom |
| Counselor Office and Therapy Space | Office and Therapy space are part of a classroom partition now |
| Larger Conference Room | Ready for School Board Meeting May 4 Preliminary Draft - Not Ready for School Board Meeting |
| Clubhouse/Behavior Space | Currently part of a classroom partition |
| Functional Library | Right now we only have a small space to store books for Kindergarteners |
| Additional Staff Bathroom | We only have <u>one current bathroom</u> to use for a <u>large staff of 102</u> |
| Staff Room | Current one has been turned into Reading Classroom |
| Free Standing Multi-Purpose Room | To no longer stop therapy in multi-sensory room for LEEP students |

Why We Need these New Spaces to Relieve Overcrowding

For LEEP Program

| New Space | Why We Need It |
|---|--|
| 2 Larger Friends Rooms | Current K spaces are not made for specialized needs of program for Autistic Students and amount of adult support needed. |
| PALS Room | Right now they are using a converted conference room and sharing a classroom with LEEP |
| Occupational Therapy Space May 4 Preliminary Draft - Not Ready for School Board Meeting | Right now Therapy happens in the hallway or when Ready for School Board Meeting |
| Speech Therapy Space | Currently happens in the hallway or any free space on time of day |
| OT and Speech Office Space | Currently housed in converted closets and partitioned classrooms |
| SPED Conference Room | Currently being used for PALS and LEEP programs |

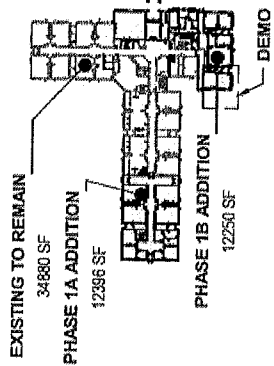
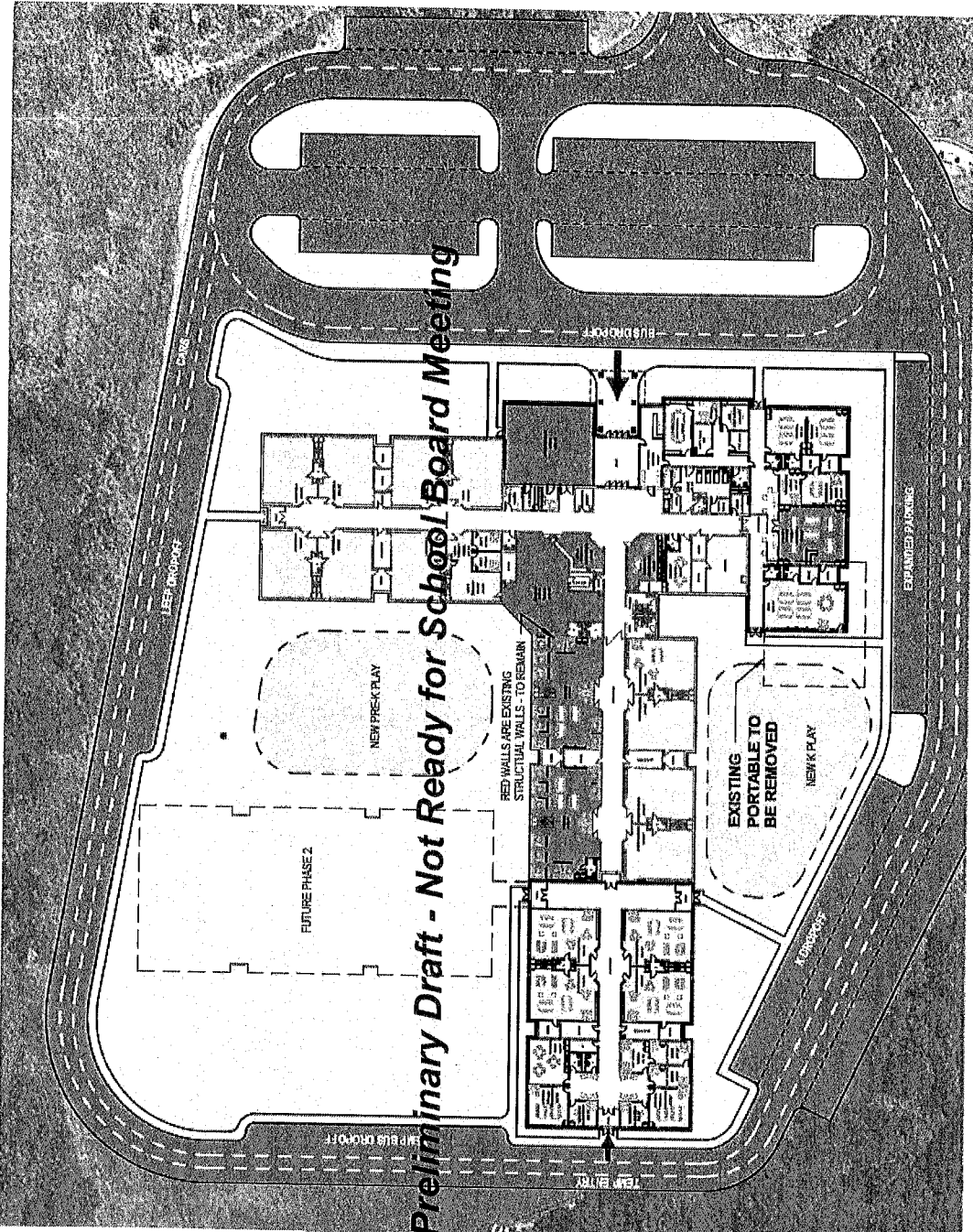
Traffic Flow and Playgrounds in Phase 1

Unlike our other 5 schools, Moose Hill does not have a good “loop” that allows us to have a mixture of parents dropping off their students as well as buses. The small loop we have right now is problematic and does not control traffic well.

For that reason, the site work proposed in the conceptual design should also be part of Phase 1 planning.

The Phase 1a part of the conceptual design is right on top of the current playground for Kindergarten so that will need to be moved.

May 4 Preliminary Draft - Not Ready for School Board Meeting



May 4 Preliminary Draft - Not Ready for School Board Meeting

PHASE 1

LONDONDERRY SCHOOL DISTRICT

LONDONDERRY SCHOOL DISTRICT MASTER PLANNING - PHASE 1



SCALE: As indicated

05/02/2023

LAVALLEE BRENSINGER ARCHITECTS

PHASE 1

Rough Budget Costs for Phase 1

We will need to engage with a construction manager to get accurate cost estimates for Moose Hill. That is the next phase of this process we need the School Board's consent on.

For the purpose of this presentation, the Trident Group used the updated conceptual design to get a rough budget estimate for comparison and scale since the Master Planning was done last year working with their existing contacts in the construction business.

May 4 Preliminary Draft - Not Ready for School Board Meeting

\$???,???,???

Difference Between Phase 1 and Phase 2 on the Operating Budget

Phase 1 = We are adding Space Only for Existing Programs and People

Phase 2 = We are adding Space and New Staff for Full Day Kindergarten

May 4 Preliminary Draft - Not Ready for School Board Meeting

The only caveat for Phase 1 is we would most likely need a new 2nd shift custodian for clean and manage the additional 24,000 sq ft.

(This additional custodian would cost \$??,?? In FY23 figures)

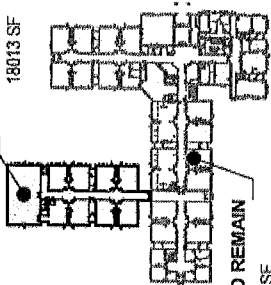
Vetting the Space Needs for Phase 2 - Full Day K

- We would propose adding 7 more Kindergarten classrooms.
Having 14 Kindergarten teachers means we could handle 260 to 280 Kindergarteners per year. In the recent past and present our 1st grade classes have been closer to 300. If that ends up being our Full Day K enrollment we will know by the fall if we can make that enrollment work with a "Master Schedule" and the current conceptual design.
- Phase 2 would then also have a kitchen and cafeteria - which then doubles as a large multi-purpose space for Specials and other events.

May 4 Preliminary Draft - Not Ready for School Board Meeting

PHASE 2 ADDITION

18013 SF

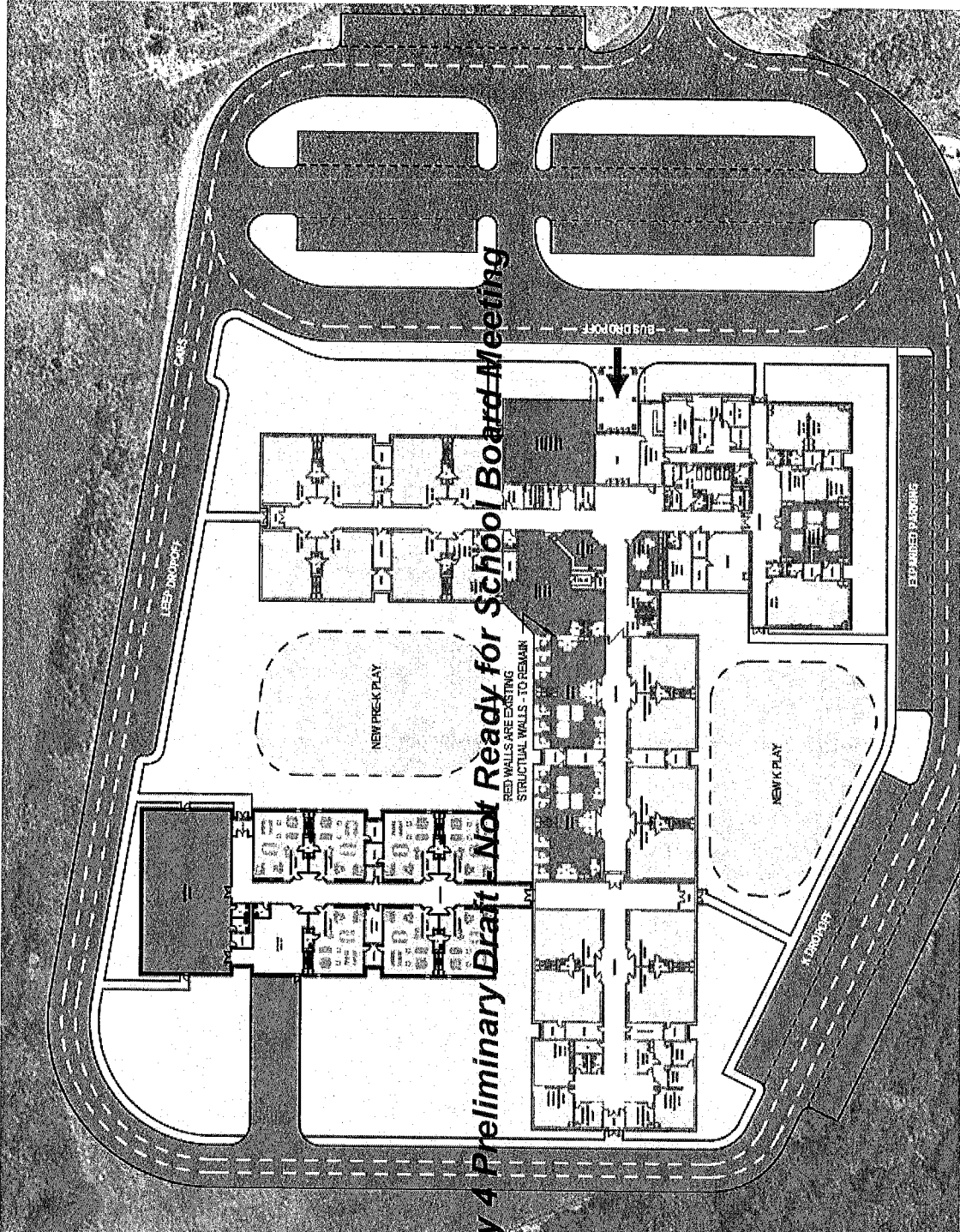


EXISTING TO REMAIN

59526 SF

EXPANDED
FIELDS

PHASE 2



May 4 Preliminary Draft - Not Ready for School Board Meeting

Rough Budget Costs for Phase 2 - Building

We will need to engage with a construction manager to get accurate cost estimates for Moose Hill. That is the next phase of this process we need the School Board's consent on.

For the purpose of this presentation, the Trident Group used the updated conceptual design to get a rough budget estimate for comparison and scale since the Master Planning was done last year working with their existing contacts in the construction business.

May 4 Preliminary Draft - Not Ready for School Board Meeting

\$???,???,???

Rough Budget Costs for Phase 2 - New Staff

| New Staff | For 2027-28 Operating Budget (4 Years Away) |
|--|--|
| 7 New Kindergarten Teachers | |
| 7 New Classroom Aides | |
| 1 New SPED Teacher | |
| 4 New Specials Teachers (Art, Music, PE, and Library) | |
| May 4 Preliminary Draft - Not Ready for School Board Meeting 0.5 New Nurse | |
| 1 New Custodian | |
| 0.3 Additional Guidance Time | |
| 2 New Cafeteria/Recess Monitors | |

Financial Big Picture - Phase 1

Phase 1 Investments

| Overall | Yearly |
|---------------|-------------|
| \$???,???,??? | \$?,???,??? |

There are no savings or increased revenue from Phase 1. It would be an investment to solve the overcrowding at Moose Hill.

May 4 Preliminary Draft - Not Ready for School Board Meeting

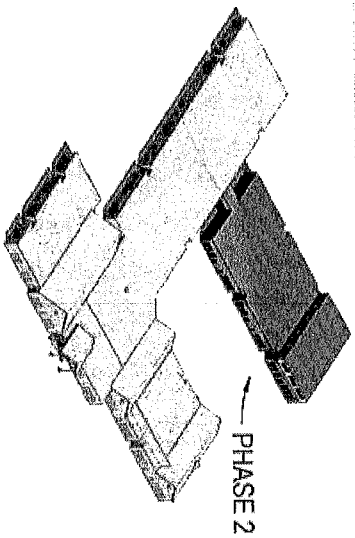
Financial Big Picture - Phase 2

Phase 2 Investments

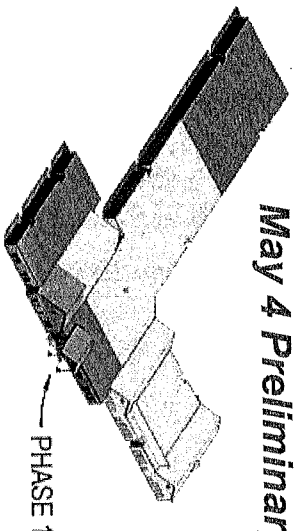
| | Overall | Yearly |
|---------------------|--------------|---------------------------|
| Space | \$??,???,??? | \$?,???,??? |
| Staff | | \$?,???,??? |
| Savings | | -\$???,??? |
| Increased Revenue | | -\$???,??? |
| One Time Revenue | | -\$???,??? (2027-28 Only) |
| Net Yearly Increase | | \$?,???,??? |

May 4 Preliminary Draft - Not Ready for School Board Meeting

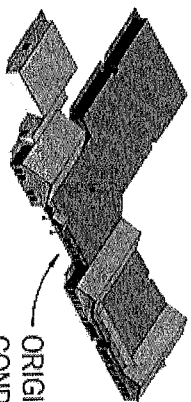
Phase 2 Investments will also generate savings in no more midday bus runs, increased state aid for Full Day Students, and a one time Kindergarten Grant Revenue in the first year.



PHASE 2

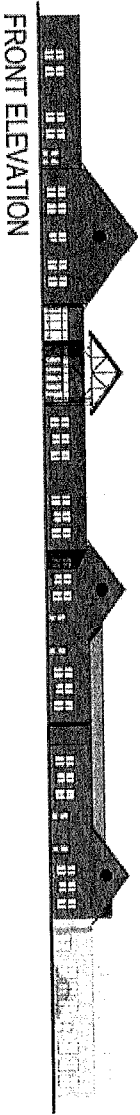
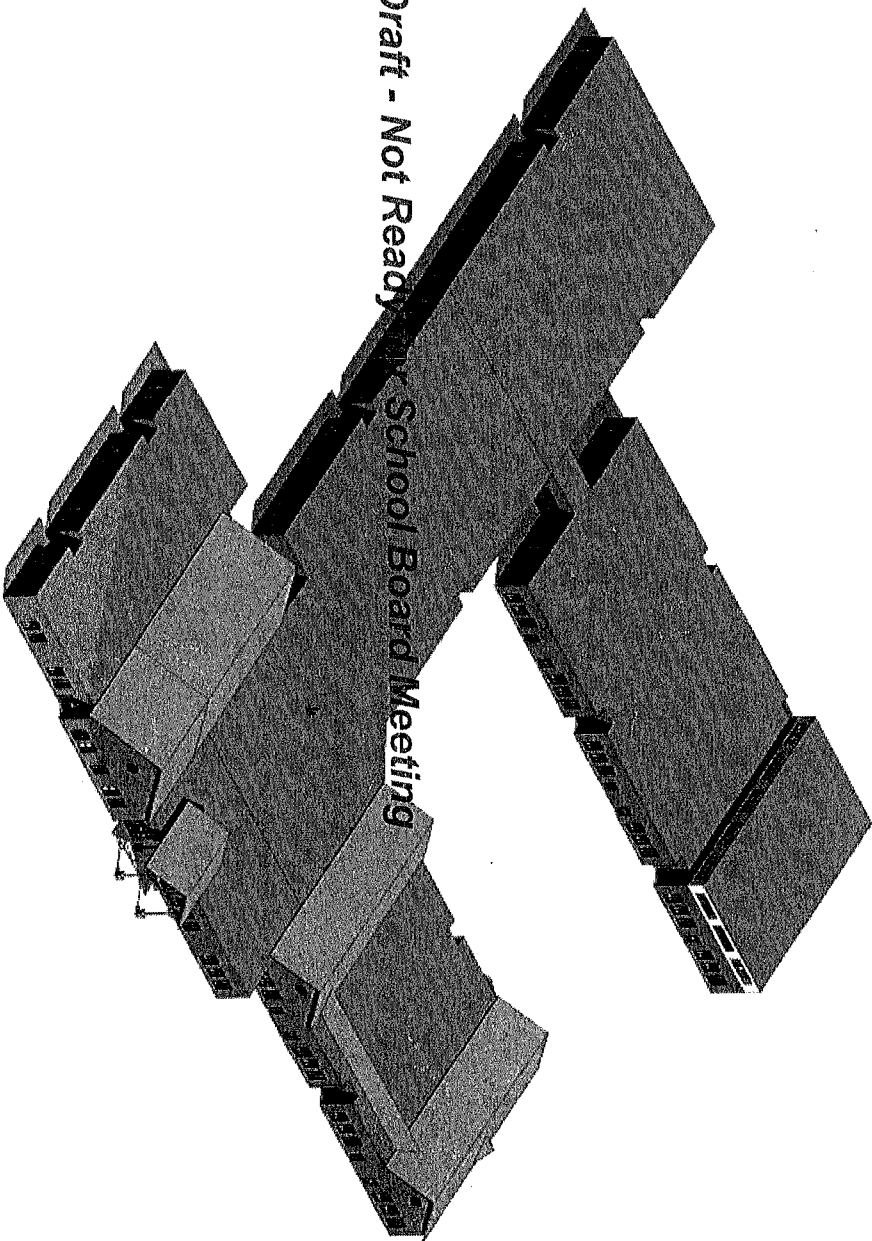


PHASE 1



ORIGINAL
CONDITIONS

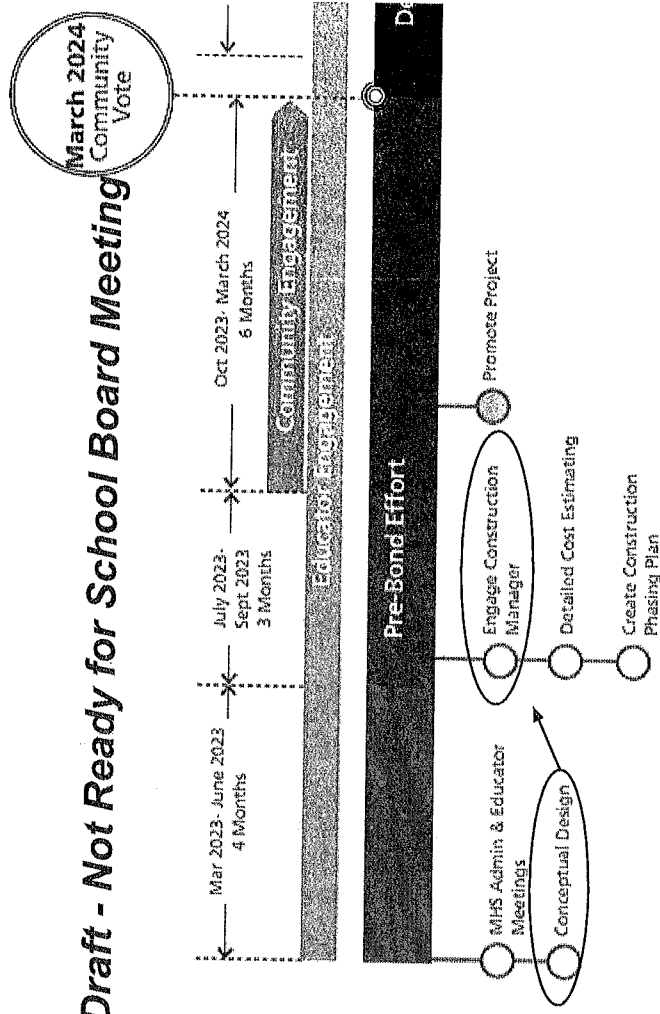
May 4 Preliminary Draft - Not Ready for School Board Meeting



FRONT ELEVATION

Consent from the School Board to Get Detailed and Accurate Costs

We have a well vetted conceptual design - is the School Board comfortable moving forward ~~May~~ **4** Preliminary Draft - Not Ready for School Board Meeting process to have the administration engage with a construction manager (or cost estimator) to come up with detailed and accurate costs to be part of next year's budget discussion?



Any final decisions on these phases and projects would be next fall and winter by the School Board

**What Questions Does the School Board
Have?**

**What help does the School Board need from
the Committee Moving Forward?**

May 4 Preliminary Draft - Not Ready for School Board Meeting